

**Use this upgrade procedure only for Unleashed with v3.5.1 or newer installed.
If upgrading from previous versions, please refer to the appropriate upgrade guide.**

Overview

This document is a detailed step-by-step for upgrading the firmware in the BAD BOY Unleashed Wi-Fi devices. This is not a mandatory upgrade and as such, there is no requirement to upgrade. However, new features in Xtreme / Express take advantage of this newer version and it is highly recommended to upgrade Unleashed firmware if Xtreme/Express have their firmware upgraded. This revision to Unleashed firmware does not change performance. The actual upgrade consists of the following steps:

- 1) Preparation
- 2) Opening the existing administration pages
- 3) Upgrading the firmware
- 4) Activating the new firmware
- 5) Restoring original settings
- 6) Verifying operation

What's Changed in Unleashed

General

- Compatibility with Xtreme and Express
- Auto configuration of device operating parameters based on country selection. This assists in complying with various country's regulations concerning channel usage, maximum output power allowed and mode of operation. Addition of country selection capability at each login.
- Improvements for stability and performance.

Do all of the following steps in the order presented. Avoid going back to repeat steps.

- Check off items when verified or completed.

Step 1 - Before beginning, ensure that you have:

- Access to Unleashed management pages.
- Firmware file - this can be downloaded from www.bitstorm.com under the **Support** tab. **Ensure that you download the correct version for your Unleashed.** Attempting to upgrade using a different family product firmware can result in your device becoming unusable or bricked. If this happens, you may be required to return your device to Bitstorm for firmware reinstallation.
- Latest Unleashed Installation and Operation Guide to reference after upgrading – download this from www.bitstorm.com under the **Support** tab.
- The process of upgrading firmware will disconnect the device from any hotspot that it may be connected to. Please ensure that all downloads or uploads have completed and all work saved prior to doing this firmware update.

Step 2 - Open Unleashed management application

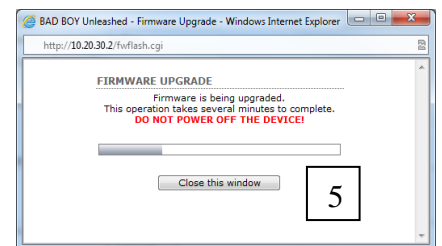
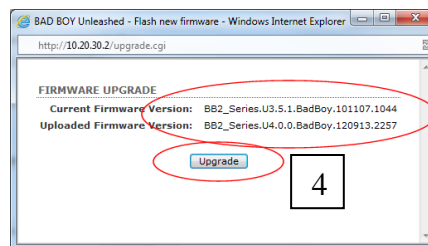
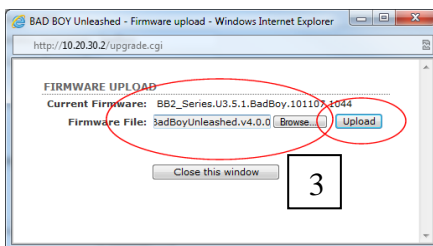
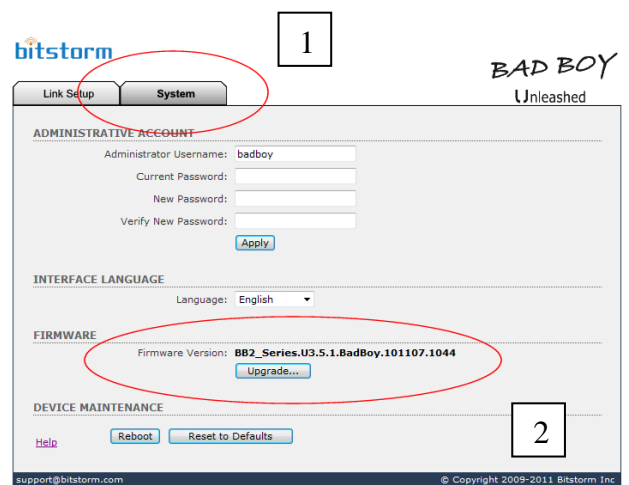
- Depending on your model, enter unleashed.wifi in the address bar of a browser and login.

Step 3 - Record current setting

- Record your **Network Name** and **WPA Preshared Key**. You will be required to re-enter these at the end.

Step 4 - Upgrade the firmware

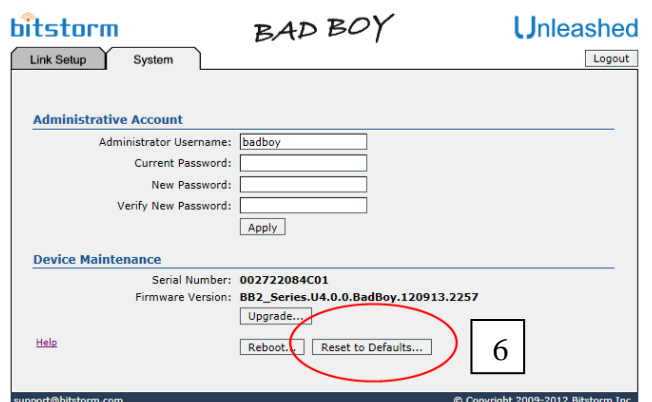
- Navigate to the System tab. [1] and click 'Upgrade' in the Firmware section of the System tab. [2]
- Browse for the new firmware file that was downloaded and once selected, click Upload which will transfer the new firmware to your device. The transfer will take a few seconds and activity may not be displayed on the screen, so be patient. [3]
- Review the Current Firmware Version and the Uploaded Firmware Version and ensure that you have the correct Unleashed firmware and that the uploaded file's version is newer. [4]



- Click 'Upgrade'. [4] A progress bar will be displayed. On the device, you will see a single up-down sequential shifting of the signal strength LEDs. This will take several minutes to complete. You may also note Ethernet disconnects and reconnects throughout. **IMPORTANT: DO NOT POWER OFF THE DEVICE!** [5]

Step 5 - Resetting your device to activate your new firmware

- Once the upgrade is complete, on the System tab, click 'Reset to Defaults' button [6] followed by 'Yes' in the confirmation window. A progress bar is again displayed. If you changed your network name to something other than the default, you will be disconnected.



Step 6 – Reconnecting

- Once finished, you should look for the default Bad Boy hotspot. Reconnect using the default access key '**password**' (without the single quotes).

Step 7 – Restoring your settings

- Once connected, log in to Unleashed using the default UID '**badboy**' and password '**badboy**' (without the single quotes). On the Link Setup tab change the Network Name and WPA Preshared Key back to what you had recorded in Step 3 previously. Click 'Apply'. The default network Bad Boy will disappear being replaced by the new network that you just created. You may be required to reconnect to your new network using your restored WPA Access Key.

Congratulations!
Your Unleashed firmware upgrade is now complete.

Troubleshooting:

If after following the above steps, your Xtreme or Express is not responding, check and do the following:

- 1) If you cannot connect to the administration screens, try using all of the following browser addresses: unleashed.wifi, badboy.unleashed or http://10.20.30.2.
- 2) After ensuring that the update function has completed, power off the Unleashed, wait a number of seconds and then re-apply power.
- 3) Contact us if you experience continued difficulty. We can be reached at 647-724-8328 between the hours of 8am and 5pm EST Mon-Fri.

Contact:

Bitstorm Inc.
33 University Ave.
Suite 1407
Toronto, Ontario, Canada, M5J 2S7
Phone: 1-647-724-8328 (between 8:30am and 5pm EST Mon – Fri)
Skye: bitstorm.inc