

**Use this upgrade procedure only for Xtreme / Express with v3.5.3 or newer installed.
If upgrading from v3.5.1, please refer to the appropriate upgrade guide.**

Overview

This document is a detailed step-by-step for upgrading the firmware in the BAD BOY Xtreme and Express Wi-Fi devices. This is not a mandatory upgrade and as such, there is no requirement to upgrade. The revisions to the firmware do not change performance. The actual upgrade consists of the following steps:

- 1) Preparation
- 2) Opening the existing administration pages
- 3) Upgrading the firmware
- 4) Activating the new firmware
- 5) Verifying operation

What's Changed in Xtreme / Express

General

- Corrects a recently introduced browser compatibility issue
- Minor improvements to all tabs to improve readability
- Minor improvements for stability and performance

Do all of the following steps in the order presented. Avoid going back to repeat steps.

- ☑ Check off items when verified or completed.

Step 1 - Before beginning, ensure that you have:

- ☐ Access to Xtreme or Express management pages.
- ☐ Firmware file - this can be downloaded from www.bitstorm.com under the **Support** tab. **Ensure that you download the correct version for your Xtreme or Express.** Attempting to upgrade using a different version of firmware can result in your device becoming unusable or bricked. If this happens, you may be required to return your device to Bitstorm for firmware reinstallation.
- ☐ Latest Xtreme / Express Quick Start Guide to reference after upgrading – download this from www.bitstorm.com under the **Support** tab.
- ☐ The process of upgrading firmware will disconnect the device from any hotspot that it may be connected to. Please ensure that all downloads or uploads have completed and all work saved prior to doing the firmware update.

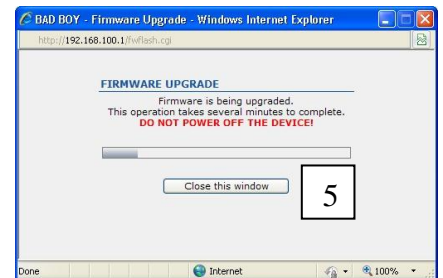
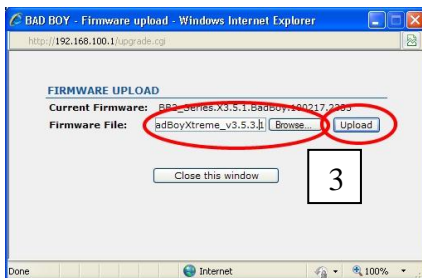
Step 2 - Open Xtreme or Express administration page

- ☐ Depending on your model, enter xtreme.wifi or express.wifi in the address bar of a browser, login if required and navigate to the System tab. [1]



Step 3 - Upgrade the firmware

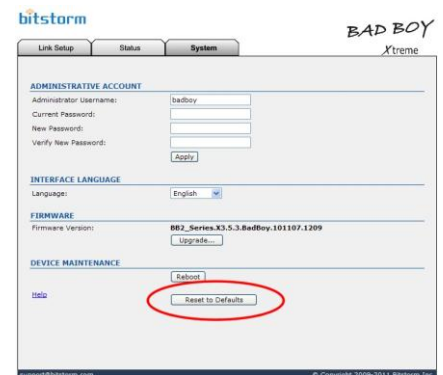
- ☐ Click 'Upgrade' in the Firmware section of the System tab. [2]
- ☐ Browse for the new firmware file and once selected, click Upload which will transfer the new firmware to your device. The transfer will take a few seconds. [3]
- ☐ Review the Current Firmware Version and the Uploaded Firmware Version and ensure that you have the correct Xtreme/Express firmware and that the uploaded file's version is newer. [4]



- ☐ Click 'Upgrade'. [4] A progress bar will be displayed. On the device, you will see a single up-down sequential shifting of the signal strength LEDs. This will take several minutes to complete. You may also note Ethernet disconnects and reconnects throughout. **IMPORTANT: DO NOT POWER OFF THE DEVICE!** [5]

Step 4 - Resetting your device to activate your new firmware

- ☐ On the System tab, click 'Reset to Defaults' button followed by 'Yes' in the confirmation window. [6]
Your firmware upgrade is now complete!



Troubleshooting:

If after following the above steps, your Xtreme or Express is not responding, check and do the following:

- 1) If you cannot connect to the administration screens, try using all of the following browser addresses: xtreme.wifi (or express.wifi), badboy.xtreme (or badboy.express) or http://10.20.30.1.
- 2) After ensuring that the update function has completed, power off the Xtreme or Express, wait a number of seconds and then reapply power.
- 3) Contact us if you experience continued difficulty. We can be reached at 647-724-8328 between the hours of 8am and 5pm EST Mon-Fri.

Contact:

Bitstorm Inc.
33 University Ave.
Suite 1407
Toronto, Ontario, Canada, M5J 2S7
Phone: 1-647-724-8328 (between 8am and 5pm EST Mon – Fri)
Skye: bitstorm.inc