

Refer to the Xtreme or Express Installation Guide for installing your BAD BOY Wi-Fi device.

Step 1

Without optional Unleashed: Turn off all Wi-Fi devices in your computer to prevent multiple simultaneous Wi-Fi connections. Refer to your computer's manual for specifics on how to do this.

With Unleashed: Connect to Unleashed using your laptops Wi-Fi. Refer to Unleashed Quick Start Guide.

Step 2 (skip this step if optional Unleashed is included)

Plug the ethernet cable from the BAD BOY Wi-Fi device into the computer. Ensure that your computer's ethernet port is enabled and set to use DHCP. This should be the computer's normal setup. Operating systems vary as to where and how this is checked and set.

XP: 'Start' > 'Control Panel' > 'Network Connections'. Right click your adapter, select 'Status'. Click 'Properties' then scroll the list, select 'Internet Protocol (TCP/IP)' and then click 'Properties'. Ensure that the 'Obtain an IP address automatically' and 'Obtain DNS server address automatically' radio buttons are selected.

Vista: 'Start' > 'Control Panel' > 'View network status and tasks' under 'Network and Internet' > 'View Status' > 'Properties' then scroll the list, select 'Internet Protocol Version 4 (TCP/IPv4)' and then click 'Properties'. Ensure 'Obtain an IP address automatically' and 'Obtain DNS server address automatically' radio buttons are selected.

Windows7 'Start' > 'Control Panel' > 'View network status and tasks' under 'Network and Sharing Center' > 'Local Area Connection' > 'Properties' then scroll the list, select 'Internet Protocol Version 4 (TCP/IPv4)' and then click 'Properties'. Ensure that the 'Obtain an IP address automatically' and 'Obtain DNS server address automatically' radio buttons are selected.

Linux: 'System' > 'Preferences' > 'Network Connections'. On the 'Network Connections' screen, select the adapter and click 'Edit'. Select the 'IPv4 Settings' tab and ensure that 'Automatic (DHCP)' is selected.

Mac OS X: From the Apple menu, select System Preferences. Click Network icon. In the Location drop-down list, select Automatic. In the Show drop-down list, select Built-in Ethernet. Select the TCP/IP tab. Configure TCP/IP to use DHCP. (Mac OS X v10.3: In the Configure IPv4 drop-down list, select Using DHCP. Mac OS X v10.2: In the Configure drop-down list, select Using DHCP) Click Apply Now button.

Mac OS 8/9: From the Apple menu, select Control Panel. Select TCP/IP. If a window opens with the message "TCP/IP is currently inactive", click the Yes button. In the Connect Via drop-down list, select Ethernet. In the Configure drop-down list, select Using DHCP Server. Close the TCP/IP(LAN) window. Click Save button.

Step 3

Open a browser and disregard any errors that may appear. Enter 'xtreme.wifi' or 'express.wifi' (depending on model) in the address bar and press Enter. Alternatively, 'http://10.20.30.1' can also be used. See Fig 1. When the login screen appears, enter the default Username: 'badboy' and Password: 'badboy' (without the quotes). These can be changed to something else once logged in.

Step 4

On the Link Setup tab, enter an access point name. See Fig 2. Or click the 'Select...' button to choose from a list. See Fig 3. On the Survey page, click 'Select' on a desired wireless access point. Enter Wireless Security settings if required. See Fig 2. Finish by clicking 'Apply' at the bottom and observing changes being applied.

Note: When 'Any' is entered as the ESSID and Security is set to 'none', BAD BOY will automatically connect to the strongest unsecured Access Point that it finds.

Step 5

Verify a connection by selecting the Status tab and reviewing (i.e. Signal Strength, Errors, AP MAC and Wi-Fi IP Address). Click 'Refresh' to update. See Fig 4.

For more information on BAD BOY operation and features, please refer to the BAD BOY Xtreme and Express User Guide at www.bitstorm.com under Support.



Fig 1

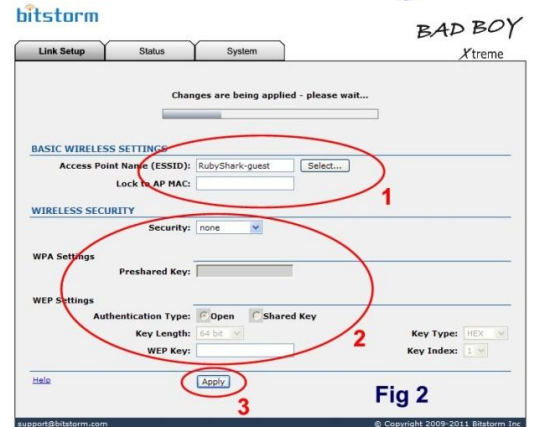


Fig 2

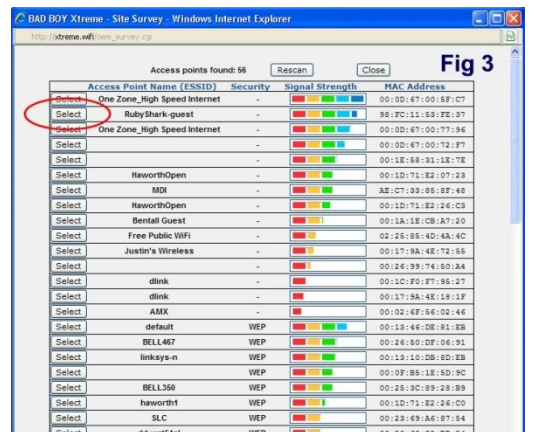


Fig 3

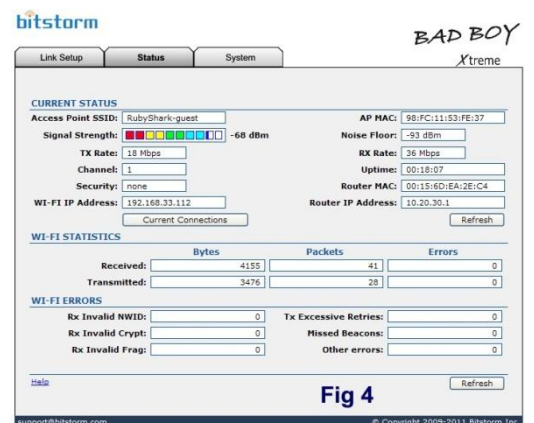


Fig 4